

Installing PenMap Software

Installing PenMap (version 5.10d) onto a PC PenTablet

1. Download PenMap 5.10d from the PenMap website.
2. Double-Click on the Setup.exe file to run the installation wizard.
3. For the Destination Directory, click *Browse* and type 5 to the C:\PenMap entry (so it reads C:\PenMap5) and click *Next* several times until asked to click *Finish*.

Installing Software License Keys for PenMap

Obtaining and Installing License Keys for PenMap

1. Have your Customer Access Code (CAC) and serial number for the Penmap5.10d accessible.
2. Navigate on the web to the site: <http://www.souris.co.uk/solspnreg/>

Welcome to the Strata Product Registration Centre

Please enter your Strata Product Serial N^o. and Customer Access Code (CAC) which was provided with your product:

Serial N ^o :	<input type="text"/>	:	<input type="text"/>
CAC	<input type="text"/>		

3. Enter Serial Number and CAC code then hit *Enter*.
The following screen will open:

STRATA
Product Registration Centre

Please check and correct your customer details below

Please note that all fields marked "*" are mandatory.

*Company	<input type="text"/>
Title	<input type="text"/>
Surname	<input type="text"/>
Forename	<input type="text"/>
Position	<input type="text"/>
*Address 1	<input type="text"/>
Address 2	<input type="text"/>
Postcode	<input type="text"/>
*Country	<input type="text"/>
*Telephone	<input type="text"/>
Fax	<input type="text"/>
*Email	<input type="text"/>

4. Complete software registration for PenMap then click *Next*.
The following screen will open:

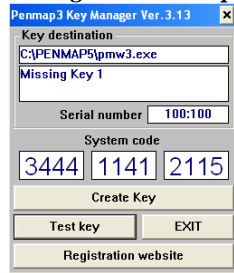
STRATA
Product Registration Centre

Strata Product Registration

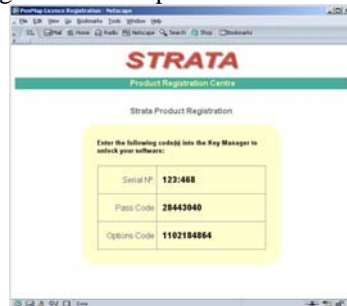
Please run the Key Manager program and enter the 12 digit System Code below then click on the Enter button.

System Code	<input type="text"/>	<input type="text"/>	<input type="text"/>	<input type="text"/>	<input type="text"/>	<input type="text"/>	<input type="text"/>	<input type="text"/>	<input type="text"/>	<input type="text"/>	<input type="text"/>
-------------	----------------------	----------------------	----------------------	----------------------	----------------------	----------------------	----------------------	----------------------	----------------------	----------------------	----------------------

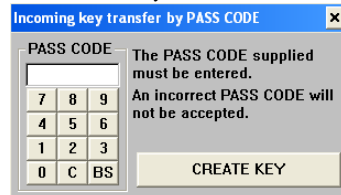
- To obtain the System Code, start the Key Manager program of PenMap within the PC Tablet, Select **Start>>All Programs Penmap>>Key Utility** which brings up the following screen:



- Enter the System code displayed in step 5 onto the screen displayed on step 4 above and click *Enter*. The following screen will open:



- Click on the *Create Key* button on the window in step 5. The following window will open:



- Enter the Pass Code displayed on the screen in step 6 into the window in step 7 and hit *Create Key* then click *Exit*.

Installing GeoMapper (version 1.3.7) Software

Before starting this installation, please call George Brimhall during business hours at (510) 292-7261 so that you and he can go through this licensing procedure together.

- Insert the GeoMapper CD into the CD-ROM drive. (If you don't have a docking station, insert the CD onto a workstation from which you can copy all the files on the CD-ROM to a USB memory stick. Insert the memory stick onto the PC PenTablet.)
- Navigate to the **GeoMapper** directory in the CD-ROM drive or USB memory stick.
- Click on the **Setup.exe** executable-icon to run the installation wizard.
- For the Destination Directory, navigate to the **C:\Penmap5** directory. (If the Version Conflict window pops open, the computer's system directory contains a newer version of a file that is in the GeoMapper installation. Click **Yes** to keep the newer existing file.)

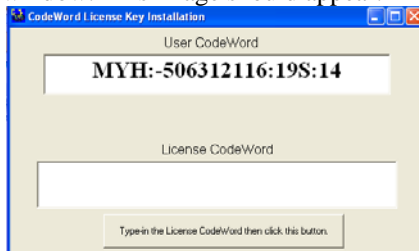
Installing License Keys for GeoMapper

Important: The License CodeWord must be entered within the same hour and calendar date that the User CodeWord is generated. If you haven't already done so, please call George Brimhall during business hours at (510) 292-7261 so that you and he can go through this licensing procedure together.

- On the Windows Desktop Toolbar time display, right-click to open a menu list.

6:17 PM

2. From the menu list, click **Adjust Date/Time**.
3. In the Date/Time Properties window, select the **Time Zone** tab.
4. Pull-down to select **(GMT-08:00) Pacific Time (US & Canada); Tijuana**
5. Click **Apply**; and then click **OK**.
6. From the Windows desktop, select **Start>>All Programs>>GeoMapper>>GeoMapper 1.3.7**
7. Click **Yes** to proceed with the full licensed installation.
8. Click **OK** in the message window that pops open.
9. Click on the CodeWord License Key Installation icon found on the Desktop Toolbar to maximize the window. This image should appear.



10. Send the **User CodeWord** (the alpha-numeric that appears in the CodeWord License Key Installation window) that appears on your window via e-mail to brimhall@berkeley.edu. He will send a return e-mail with the License CodeWord.
11. Type-in the License Codeword into the window in step 9.
12. Click the large button at the bottom of the window.
13. Click **OK** in the message window. (Note: there should appear a congratulatory text message.)
14. From the Windows desktop, select **Start>>Programs>>GeoMapper>>GeoMapper 1.3.7**
15. In the License Agreement window, at the bottom of the license agreement, type-in the user's name and the user's organization.
16. Toggle-on the option, "Yes, I agree with all the terms and conditions above. Continue installing GeoMapper."
17. In the Authorization Codeword window, enter the **Authorized user name** and the **Authorization code**, which should have been distributed with the GeoMapper installation CD.
18. Click **OK**.
19. A message window will open reminding the user to send the registration file created to the distributor, click **OK**.
20. A successful installation should pop-open the GeoMapper window. It should contain the General Geology Project Legend.